

AccStick A01-16400 Quick Start Guide



Shinyei Testing Machinery Co.,LTD.

(HEAD OFFICE)

B47-11, Katoridai, Tsukuba, Ibaraki, Japan, 300-2657
Tel: +81-29-848-3571 FAX: +81-29-848-3572

(KOBE OFFICE)

SHINYEI BLDG.5F, 77-1, Kyomachi, Chuo-ku, Kobe, Hyogo,
650-0034, JAPAN
Tel: +81-78-392-6963 FAX: +81-78-332-1619

(NAGOYA OFFICE)

Nishiki emuai BLDG. 6F, 1-7-39, Nishiki,Nakaku, Nagoya,
Aichi, 460-0003, Japan
Tel: +81-52-218-5472 Fax: +81-52-218-6110

URL: <http://www.shinyei-tm.com/>

1. Preparation

Before being able to use the AccStick, you will need to install the specified software for operating the AccStick in your PC. You can find it at our website as follows.

URL: http://www.shinyei-tm.com/product_AccStick.html

2. How to use

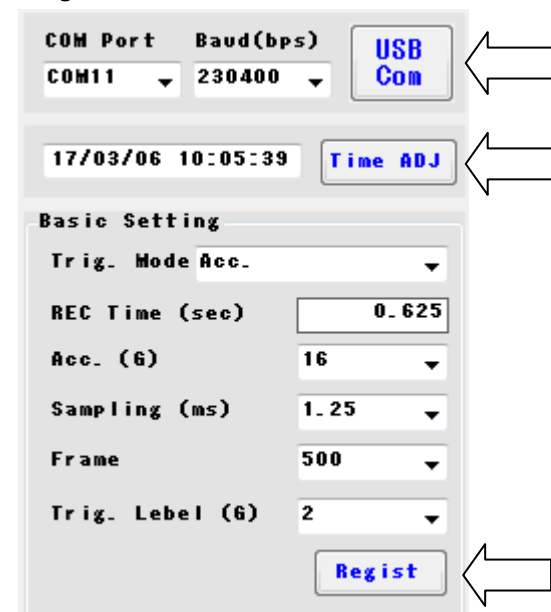
Below are the instructions on how to use the AccStick.

① Measuring Conditions

Connect the Accstick to your PC with the specific harness and USB cable as such as picture below.



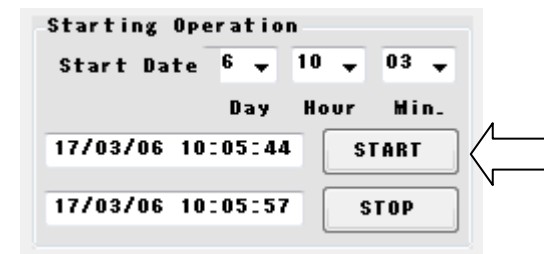
After that, open the software for AccStick on your PC, click on the icon "USB com" and "Time ADJ" in order. After which, you can adjust the measuring condition and these parameters will be stored on the AccStick after clicking "Regist".



② Start Measuring

Measuring will start after clicking the "Start" button. Here, you can select the start date & time if you select Timer mode or Timer & Acc mode at the Trigger mode. AccStick will start measuring at the designated time.

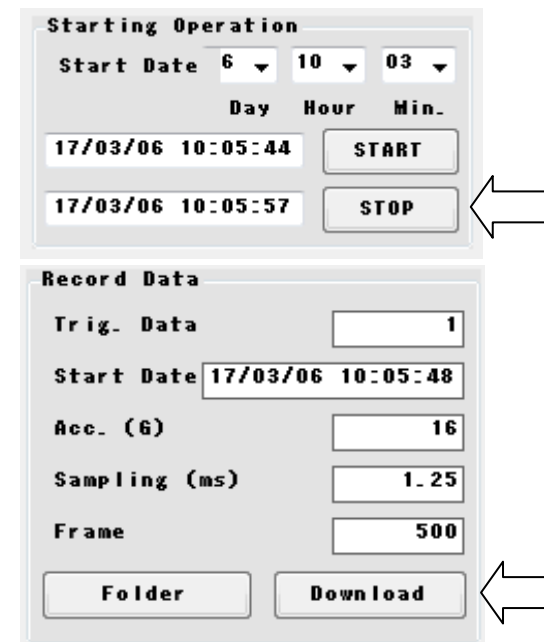
Note: Please turn on the power switch on the AccStick before disconnecting with the USB cable.



③ Data Download

After measuring, connect the AccStick to the PC, and click "Stop" and "Download" in order. Then the measurement data will be displayed on your PC screen and will create a .csv file in a folder that you can specify in "Folder" when you click Download.

Note: Connect to the PC without turn off the main power of the AccStick even after measuring has ended. Please turn off after data has been downloaded.



3. Caution

- This unit is manufactured rigidly for shock and vibration measurement. However, if an excessive shock is applied to the unit by directly dropping it or the like, the unit may be damaged. The unit may be damaged if an impact exceeding 10,000m/s² is applied.
- If the unit directly comes in contact with water droplets (dew formation), sea breeze, etc., its electronic circuits may become abnormal. Don't expose the unit to such conditions.
- The working temperature and humidity of this instrument is between 0°C ~ +60°C. In an environment where the instrument is exposed to direct sunlight or subjected to a temperature of lower than 0°C, the functions of the electronic circuits and dry batteries drop noticeably causing measurement to be impossible. Over 60°C condition, inside battery causes damage. In addition, the

unit may be damaged under such an environment. (For the dry batteries, refer to the maker's specifications)

- The acceleration sensor and electronic circuits are sealed at the lower part of the case. Don't loosen any screws on the top plate, otherwise problems may occur and the accuracy cannot be guaranteed.
- Always turn on the main power before starting. Turn off the main power when you don't use this unit to prevent any problems with over discharge.
- Do not attempt to prematurely terminate the measurements during the measuring process by turning the power off. An error will occur and no data will be available for download from the unit.
- Measurements should be made during the span of time in which the battery retains its charge. In the event of the battery voltage falling below the pre-set range during measurements, all data will be lost.
- Operate the unit according to the specified procedures. An irregular operation, if any, may cause a problem.
- Don't use the unit under the following environments.
 - Where oils, chemicals, steam, iron powder, and dust exist in excess.
 - Where static electricity, magnetic fields, and noise frequencies are produced
 - A location in constant exposure to Acetone, ammonia, ethanol, hydrogen dioxide, hydrogen sulfide, chlorine gas, sulfur oxides, nitrogen oxides, etc.

4. Product Warranty

AccStick is guaranteed as specified below.

- For any abnormality under normal working conditions, we will repair the unit without any charge for one year from the date of delivery.
 - The unit delivered has gone through severe inspections. If a problem should occur, please contact your sales agent or our company.
 - We will repair the unit at counter value in the following cases even if it's within the warranty period.
 - Problems caused by usage other than normal working purposes
 - Problems caused by a misuse or unauthorized repair or modifications
 - problems caused by fires or natural disasters
- Any secondary loss, including damage on facilities, opportunity loss and loss of profit, even if it's caused by the malfunction of AccStick is out of the scope of this warranty.

Precautions for operating the AccStick

Please keep this notice

Before using the AccStick, please read this notice and the AccStick's instruction manual thoroughly. We will not hold responsibility of any problems in relation to this notice.



Danger

Problems resulting from the generation of heat, etc. might occur if you use misuse the AccStick. Note contents as follows.



Prohibit

Any sudden shocks, drops or hard strikes towards the Accstick unit may cause body damage or generation of heat with the lithium polymer battery that might catch fire. Be careful with this usage.



Prohibit

Do not store and operate the AccStick in any place with heats over 60°C or extremely wet. These might be cause problems.



Prohibit

Do not expose AccStick to wet conditions as damage or heating the internal battery might be occurred.



Prohibit

Do not open the casing or modify the AccStick. These might be cause damage or other problems.



Prohibit

Prevent dust contamination at the connector part of the AccStick to prevent damage to the connector and lithium battery from overheating.



Prohibit

Do not use the AccStick if you have found any errors to the instrument, or swelling of the battery.



Action

Always use the cable paired with the AccStick when charge the battery. Other cables might cause any problems, overheating or damage to the battery.



Action

When you dispose of the AccStick, please confirm on how to dispose it from a scrap company near you.