

For long time use of your devices with high safety and accuracy, Shinyei Testing Machinery offers following services.

Quality assurance

All recorders from Shinyei Testing Machinery are inspected with our particular testing system.

Maintenance & Repair

We supply maintenance and repair service, also give you advice of technical usage of your devices with our seminar.

Calibration

We can issue the calibration certification with the traceability system as an accuracy proof of your devices. This service's recommendation is annual.

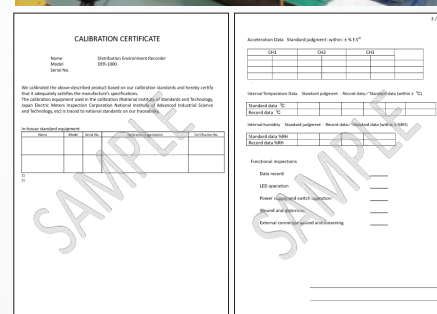
Measuring Support

To be meaningful your measuring data, we provide you the technical advice for our recorders and the measuring way. Please contact us If you have any questions regarding field data measuring and appropriate way to use our recorders.

Data analysis service (option)

This service is to analysis your measured data by DER-1000 and submit the report with our technical observation.

※object:DER-1000



Field Data Recorder (Shock & Vibration)

G-MEN Series



DER-1000

Extreme model that enable to measure the vibration and shock waveform with high sampling rate. Also it can analyze PSD and free-fall height to feedback for the optimized packaging design.

FIR-106

Analog simple recorder without the battery. Collected data is indicated on the paper.



DR01/20/100

Affordable model for monitoring the peak acceleration. This model is suitable to collect the multi channels of distribution route.

Shinyei Group,
Your partner for prosperous society
SHINYEI SHINYEI TESTING MACHINERY CO., LTD.

<http://www.stm.shinyei.co.jp/eng/>

Head Office

Address: B47-11, Katoridai, Tsukuba, Ibaraki, 300-2657, JAPAN

Tel: +81-29-848-3571 FAX: +81-29-848-3572

Kobe Office

Address: Shinyei BLDG. 5F, 77-1, Kyomachi, Chuoku, Kobe, 650-0034, JAPAN

Tel: +81-78-392-6963 FAX: +81-78-332-1619

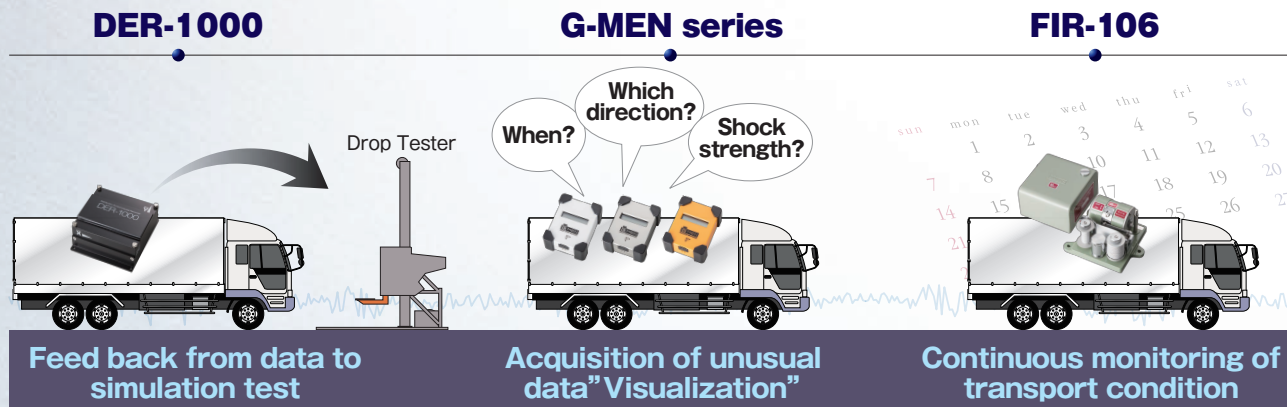
Specifications and information listed in this catalog are subject to change without notice. 03.2016



SHINYEI SHINYEI TESTING MACHINERY CO., LTD.

<http://www.stm.shinyei.co.jp/eng/>

Field Data Recorder line-up



	Item	DER-1000	G-MEN	FIR-106
Measurement subject	Vibration	○	○	○
	Shock	○	○	×
	Temperature & Humidity	○	○	×
Use	Logistics Quality	○	○	○
	Package Improvement	○	×	×
	Product Improvement	○	×	×

G-MEN series

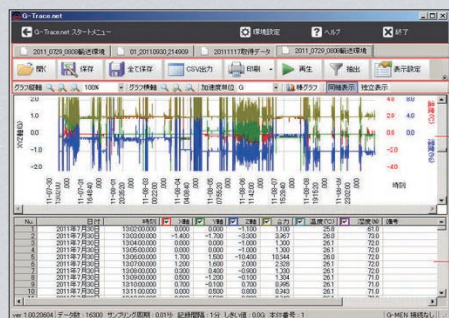
Feature

- 3-axis acceleration, Temperature and Humidity
- Recording the peak acceleration
- Max. 50days battery life (10ms sampling)
- Selectable from 3-models by use
- Capable of loading on airplane (Applied RTCADO-160D Section21)

Application

- Transport quality improvement, survey for control
- Sampling problems at logistics process
- Logistics traceability

Standard Software G-Trace.net



Main function

- Transmit and receive of setups / Receiving the recording data
- Output CSV data / Display list/graph / Display 3D View
- Replay and stop data / Online measurement / Sampling data



DR01
Minute vibration recording

DR20
Transportation vibration recording

DR100
Transportation shock vibration recording

Specification

Model	DR01	DR20	DR100
Acceleration Range	1G / 2G (changeable)	10G / 20G (changeable)	100G
Frequency Range	DC-100Hz	DC-100Hz	16Hz-100Hz
Resolution	0.01G (at 1G) 0.02G (at 2G)	0.1G (at 10G) 0.2G (at 20G)	1G
Memory size	65500 points		
Continuous record time	Maximum 50 days (at 10ms sampling)		
Sampling rate	1 / 2 / 5 / 10 / 20 (ms)		
Temperature & humidity	Temperature / 0 ~ 50 °C, Humidity / 30 ~ 90 % rh		
Battery	AA battery x 2		
Interface	USB mini-B		
Size	75.5 x 60.5 x 33mm		
Weight	135g(include battery)		
OS for software	Windows 7 (32bit, 64bit)		
Operating environment	0 ~ 50 °C (non condensing)		

DER-1000

Feature

- 3-axis acceleration, Temperature and Humidity
- Recording the detailed acceleration wave, and multi data analysis
- Max.100days battery life
- 1GB large capacity memory
- Capable of all over recording
- Selectable High / Normal Spec version
- Capable of loading on airplane (Applied RTCADO-160D Section21)

Application

- Transport quality improvement, survey for control
- Making out the standard of Drop test and Vibration test for packaged freight
- Recording the transport environment data for improvement of package specification
- Sampling problems at logistics process
- Acquisition data for product environment test
- Logistics traceability
- Survey of vibration and shock at transport

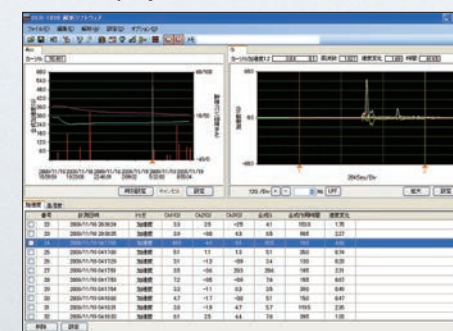
Specification

Model	High Spec	Normal Spec
Memory size	1GB	16MB
Continuous record time (*)	Maximum 100days	Maximum 70days
Trigger mode	Acceleration / Time / W trigger	Acceleration
Frame length	512 / 1024 / 2048 / 4096	1024 / 2048
Sampling (ms)	0.25 / 0.35 / 0.5 / 1 / 2 / 5 / 10 / 20	0.5 / 1 / 2
Acceleration measurement	Tri-axial piezoelectric type (5 / 10 / 25 / 50G Acceleration rage switchable)	
Temperature & humidity	Temperature / -20 ~ 60 °C, Humidity / 0 ~ 100 % rh	
Battery	9V battery x 4(max.), parallel connection	
Interface	USB	
Size	121 x 109 x 58mm	
Weight	950g	
Case Material	Aluminum	
OS	Windows XP / Vista / 7 (32bit, 64bit)	
Operating environment	-20 ~ 60 °C (non condensing)	
Option	GPS matching	



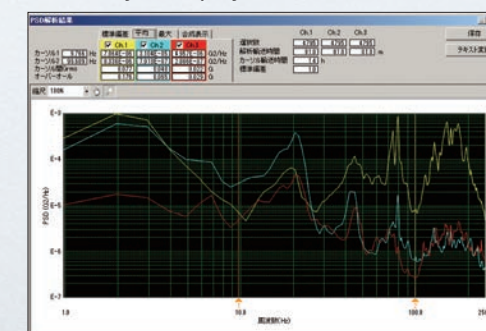
DER-1000 analysis software

Basic display



- Acceleration wave
- Acceleration peak
- Time of occurrence
- Temperature & humidity

PSD analysis display



- Analysis function
- PSD
- Histogram
- Fall height

FIR-106

Feature

- 1direction acceleration recording
- Analog type (record on paper)
- Small size and light weight
- Battery unrequired

Application

- Recording the shock that product suffered during transport
- Survey the transport vehicle and loading
- Self monitoring for transport insurance duties

