

DROP TOWER

DT-202 series

Drop Tester for Mobile Products

DT-202, 202TB

DT-202 is a standard model of drop tester that provides accurate drop tests via a unique drop mechanism for smart phones, cell phones and other mobile products. The specimen holding system retains the dropping posture of specimens, enabling it to provide drop tests superior in reproducibility. DT-202TB is a wider sized drop tester. Its application is not only limited to the testing of mobile phones, but also extends to a broader variety of products such as laptop PC, tablet device, HDD, medicine, food etc.. Also this tester has the same drop system as DT-202 for accurate drop tests. These testers are CE certified.

Features

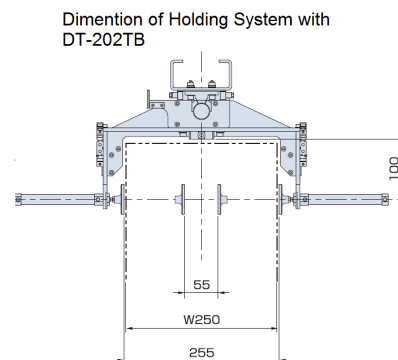
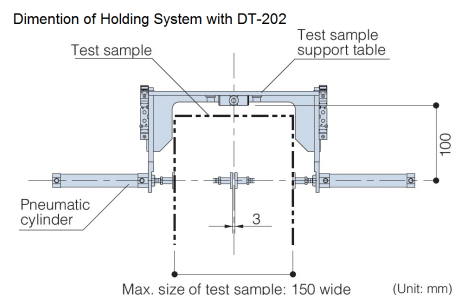
- Specialized for light and small specimens
- High Reproducibility
- Easy Maintenance for Long Term Usage
- Easy-to-Use Test Settings
- Easy-Installation to any Location
- Simple Setting by Simple Construction
- CE certified model

Compliance Standard

- IEC 60068-2-31
- JIS C 60068-2-31

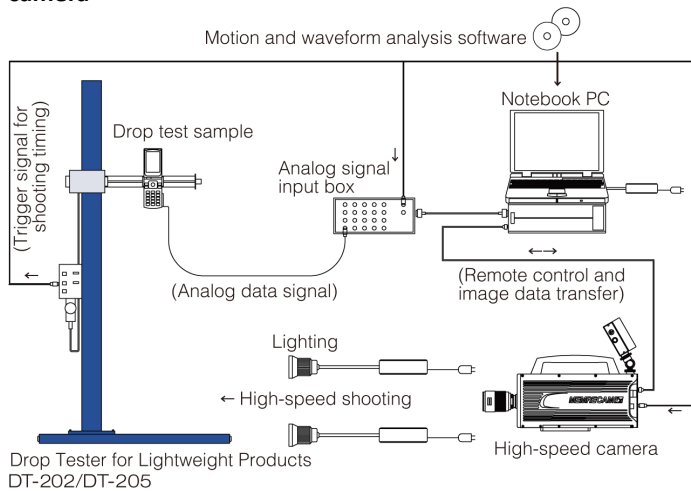
Specification

Model	DT-202	DT-202TB
Test sample maximum weight (kg)	2	
Drop height range (mm)	250 ~ 2000	
Drop height setting method	By the scale and setting guide	
Drop motion of test sample support table	By the permanent electromagnetic holder	
Fastening and releasing operation of test sample	By the pneumatic pen cylinder	
Dimension of tester (mm)	W600 × D500 × H2382	W600 × D616 × H2382
Mass of tester (kg)	about 80	
Base thickness (mm)	16	
Feed air pressure	0.49MPa or higher, 1.2dm ³ , (when operate 6 times/min) or more	0.49MPa or higher, 4.3L/min, (when operate 10 times/min) or more
Power supply	AC100 ~ 240V, single phase, 5A	
Operation environment temperature (°C)	5 ~ 35	



Options for DT-202, DT-205

Sample configuration of analysis system with high-speed camera



When an analysis system is built up using a high-speed camera, "shocks" can be observed visually. (High-speed shooting of a PCB under drop test)



· Plastic bottle



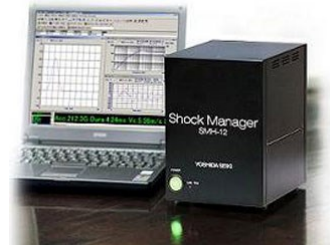
· Household detergent (Soft package)



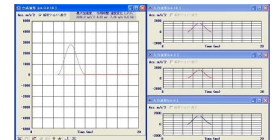
· Cellular phone (Folding type)

Shock Manager SM-500

It can contribute to the measurement and analysis of shock test. It is able to incorporate a max of 10 channels of accelerometers* and assist in monitoring its test result. With useful functions like SR and SRS analysis, it can analyze various specimens .



- User-Friendly Operation
- Multi analyzing functions



*10 channels for only the piezoelectric or build-in amplifier type
5 channels each for the piezoelectric and build-in amplifier type (Total 10 channels)

Safety Installations

The test should be carried out not only correctly, but also safely. These installations contribute in to assuring its safety.

- Safety Fence (soundproofing)
To lower external noise levels and prevents injuries during tests. It covers the whole tester. When the door is closed, those risks would be reduced.
- Safety Mat Switch
This mat surrounds the tester and stops the movement when anything is on it.
Its size and quantity can be arrange as per required.
- Photoelectric Sensor
It detects anything that cuts off its photoelectric range. These sensors need minimal space to install and keeps high sensitivity.



Safety Fence

*Available to apply either requirements